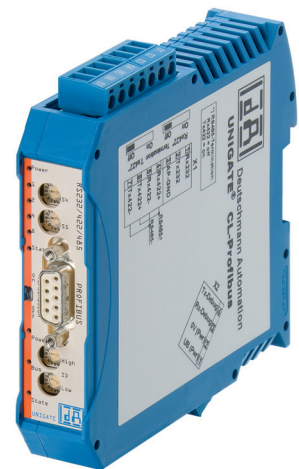




**Deutschmann**

*your ticket to all buses*

**Instruction Manual  
Universal Fieldbus-Gateway  
UNIGATE® CL - PROFIBUS**



**Deutschmann Automation GmbH & Co. KG**  
[www.deutschmann.com](http://www.deutschmann.com) | [wiki.deutschmann.de](http://wiki.deutschmann.de)



<b>1</b>	<b>Information on CE marking of the module</b>	<b>8</b>
1.1	EU Directive EMC	8
1.2	Scope of application	8
1.3	Note installation guidelines	8
1.4	Installation of the unit	8
1.5	Working on switch cabinets	8
<b>2</b>	<b>Information for the machine manufacturers</b>	<b>9</b>
2.1	Introduction	9
2.2	EU Machinery Directive	9
<b>3</b>	<b>Introduction</b>	<b>10</b>
3.1	UNIGATE® CL software flow-chart	11
3.2	UNIGATE® block diagram	12
3.3	UNIGATE® application diagram	12
<b>4</b>	<b>Operation modes of the Gateway</b>	<b>13</b>
4.1	Configuration mode (config mode)	13
4.2	Test mode	13
4.3	Data exchange mode	13
<b>5</b>	<b>RS-interface</b>	<b>14</b>
5.1	RS-interfaces at the UNIGATE® CL	14
5.2	Buffer sizes at the UNIGATE® CL	14
5.3	Framing Check	14
<b>6</b>	<b>SSI-interface</b>	<b>15</b>
6.1	Initiation of the SSI-interface	15
6.2	Hardware-wiring	16
<b>7</b>	<b>The Debug-interface</b>	<b>17</b>
7.1	Overview of the Debug-interface	17
7.2	Starting in the Debug-mode	17
7.3	Communication parameter for the Debug-interface	17
7.4	Possibilities with the Debug-interface	17
7.5	Commands of the Debug-interface	17
<b>8</b>	<b>Option I/O8</b>	<b>18</b>
8.1	Hardware-wiring	18
8.2	Technical data	19
8.3	Test mode I/O8	19
8.4	LED Power / State	19
8.5	Error handling at I/O8	19
8.6	Firmware I/O8 extension	20
<b>9</b>	<b>Mode of operation of the system</b>	<b>21</b>
9.1	General explanation	21
9.2	Interfaces	21
9.3	Data exchange	21
9.4	Possible data lengths	21
9.5	Startup phase	21
<b>10</b>	<b>Generating a Script</b>	<b>22</b>
10.1	What is a Script?	22

10.2	Memory efficiency of the programs . . . . .	22
10.3	What can you do with a Script device? . . . . .	22
10.4	Independence of buses . . . . .	22
10.5	Further settings at the Gateway . . . . .	22
10.6	The use of the Protocol Developer . . . . .	23
10.7	Accuracies of the baud rates . . . . .	23
10.8	Script processing times . . . . .	24
<b>11</b>	<b>Implemented protocols in UNIGATE® CL with Universal Script . . . . .</b>	<b>25</b>
11.1	Protokoll: Transparent . . . . .	25
11.1.1	Data structure . . . . .	25
11.2	Protocol: Universal 232 . . . . .	25
11.2.1	Data structure . . . . .	25
11.2.2	Fieldbus parameters . . . . .	26
11.2.3	RS232 parameter table . . . . .	26
11.2.3.1	Start character (232 Start character) . . . . .	26
11.2.3.2	Length 232 (232 Length) . . . . .	26
11.2.3.3	End character (232 End character) . . . . .	26
11.2.4	Communication sequence . . . . .	26
11.3	Protocol: 3964(R) . . . . .	27
11.3.1	Data structure 3964R . . . . .	27
11.3.2	Protocol definitions . . . . .	27
11.3.3	Data communication . . . . .	27
11.3.3.1	Initiation of data communication by the low-priority user . . . . .	27
11.3.3.2	Conflicts . . . . .	27
11.3.3.3	Timeout times . . . . .	27
11.3.3.4	Retries . . . . .	28
11.3.3.5	Initiation of data communication by the high-priority user . . . . .	28
11.3.4	Protocol type 3964 . . . . .	28
11.4	Protocol: MODBUS-RTU . . . . .	28
11.4.1	Notes . . . . .	28
11.4.2	UNIGATE® as MODBUS-Master . . . . .	28
11.4.2.1	Preparation . . . . .	28
11.4.2.2	Data structure . . . . .	29
11.4.2.3	Communication sequence . . . . .	29
11.4.3	UNIGATE® as MODBUS-Slave . . . . .	29
11.4.3.1	Preparation . . . . .	29
11.4.3.2	Data structure . . . . .	29
11.4.3.3	Communication sequence . . . . .	30
11.4.4	UNIGATE® as Modbus-ASCII Master . . . . .	30
11.5	The trigger byte . . . . .	30
11.6	The length byte . . . . .	30
<b>12</b>	<b>Hardware ports, switches and LEDs . . . . .</b>	<b>31</b>
12.1	Device labeling . . . . .	31
12.2	Connectors . . . . .	31
12.2.1	Connector to the external device (RS-interface) . . . . .	31
12.2.2	Connector supply voltage and DEBUG-interface . . . . .	32
12.2.3	PROFIBUS DP-connector . . . . .	32

12.2.4	Power supply . . . . .	32
12.3	LEDs . . . . .	33
12.3.1	LED "(Bus) Power" . . . . .	33
12.3.2	LED "Bus" . . . . .	33
12.3.3	LED "(Bus) State" . . . . .	33
12.3.4	LED "Power" . . . . .	33
12.3.5	LED "State" . . . . .	33
12.3.6	LEDs 1 / 2 / 4 / 8 (Error No. / Select ID) . . . . .	33
12.4	Switches . . . . .	33
12.4.1	Termination Rx 422 + Tx 422 (serial interface) . . . . .	34
12.4.2	Rotary coding switches S4 + S5 (serial interface) . . . . .	34
12.4.3	Termination (Profibus) . . . . .	34
12.4.4	Rotary coding switches High + Low (PROFIBUS-ID) . . . . .	34
12.5	The Debug cable for UNIGATE® CL . . . . .	34
<b>13</b>	<b>Error handling . . . . .</b>	<b>35</b>
13.1	Error handling at UNIGATE® CL . . . . .	35
<b>14</b>	<b>Installation guidelines . . . . .</b>	<b>36</b>
14.1	Installation of the module . . . . .	36
14.1.1	Mounting . . . . .	36
14.1.2	Removal . . . . .	36
14.2	Wiring . . . . .	36
14.2.1	Connection systems . . . . .	36
14.2.1.1	Power supply . . . . .	36
14.2.1.2	Equipotential bonding connection. . . . .	37
14.2.2	PROFIBUS DP communication interface . . . . .	37
14.2.2.1	Bus line with copper cable . . . . .	37
14.2.3	Line routing, shield and measures to combat interference voltage . . . . .	37
14.2.4	General information on line routing . . . . .	37
14.2.4.1	Shielding of lines . . . . .	38
<b>15</b>	<b>PROFIBUS DP . . . . .</b>	<b>39</b>
15.1	Description of the DPV1-/DPV2-functions . . . . .	39
15.1.1	DPV1 . . . . .	39
15.1.2	DPV2 . . . . .	39
15.2	Representation of the data in PROFIBUS DP . . . . .	39
15.2.1	Configuration telegram . . . . .	40
15.2.2	Configuration telegram . . . . .	40
15.2.3	Diagnosis . . . . .	40
15.2.3.1	Diagnosis in DPV1 . . . . .	42
15.2.4	Data exchange . . . . .	43
<b>16</b>	<b>Technical data . . . . .</b>	<b>44</b>
16.1	Device data . . . . .	44
16.1.1	Interface data . . . . .	45
<b>17</b>	<b>Commissioning guide . . . . .</b>	<b>46</b>
17.1	Note . . . . .	46
17.2	Components . . . . .	46
17.3	Installation . . . . .	46

17.4	Dimensional drawing UNIGATE® CL - PROFIBUS DP . . . . .	46
17.5	Commissioning . . . . .	46
17.6	Setting the PROFIBUS address . . . . .	47
17.7	PROFIBUS connection . . . . .	48
17.8	Connection to the process device . . . . .	48
17.9	Connecting the supply voltage . . . . .	48
17.10	Shield connection . . . . .	48
17.11	Project planning . . . . .	48
17.12	Literature . . . . .	48
<b>18</b>	<b>Servicing . . . . .</b>	<b>49</b>
18.1	Returning a device . . . . .	49
18.2	Downloading PC software . . . . .	49
<b>19</b>	<b>Annex . . . . .</b>	<b>50</b>
19.1	Explanations of the abbreviations . . . . .	50
19.2	Hexadecimal table . . . . .	51

#### Disclaimer of liability

We have checked the contents of the document for conformity with the hardware and software described. Nevertheless, we are unable to preclude the possibility of deviations so that we are unable to assume warranty for full compliance. The information given in the publication is, however, reviewed regularly. Necessary amendments are incorporated in the following editions. We would be pleased to receive any improvement proposals which you may have.

#### Copyright

Copyright (C) Deutschmann Automation GmbH & Co. KG 1997 – 2020. All rights reserved. This document may not be passed on nor duplicated, nor may its contents be used or disclosed unless expressly permitted. Violations of this clause will necessarily lead to compensation in damages. All rights reserved, in particular rights of granting of patents or registration of utility-model patents.

# 1 Information on CE marking of the module

## 1.1 EU Directive EMC

The following applies to the module described in this User Manual:

Products which bear the CE mark comply with the requirements of EU Directive „Electromagnetic Compatibility“ and the harmonized European Standards (EN) listed therein.

The EU Declarations of Conformity are available at the following location for perusal by the responsible authorities in accordance with the EU Directive, Article 10:

Deutschmann Automation GmbH & Co. KG, Carl-Zeiss-Straße 8, 65520 Bad Camberg, Germany.

## 1.2 Scope of application

The modules are designed for use in the industrial sector and comply with the following requirements.

Scope of application	Requirement applicable to	
	Emitted interference	Interference immunity
Industry	EN 55011, cl. A (2007)	EN 61000-6-2 (2005)

## 1.3 Note installation guidelines

The module complies with the requirements if you

1. comply with the installation guidelines described in the User Manual when installing and operating the module.
2. also follow the rules below on installation of the equipment and on working on switch cabinets.

## 1.4 Installation of the unit

Modules must be installed in electrical equipment rooms/areas or in enclosed housings (e.g. switch boxes made of metal or plastic). Moreover, you must earth the unit and the switch box (metal box) or at least the top-hat rail (plastic box) onto which the module has been snapped.

## 1.5 Working on switch cabinets

In order to protect the modules against static electrical discharge, the personnel must discharge themselves electrostatically before opening switch cabinets or switch boxes.



## **2 Information for the machine manufacturers**

### **2.1 Introduction**

The UNIGATE® module does not constitute a machine as defined by the EU "Machinery" Directive. Consequently, the module does not have a Declaration of Conformity in relation to the EU Machinery Directive.

### **2.2 EU Machinery Directive**

The EU Machinery Directive stipulates the requirements applicable to a machine. The term "machine" is taken to mean a totality of connected parts or fixtures (see also EN 292-1, Paragraph 3.1)

The module is a part of the electrical equipment of the machine and must thus be included by the machine manufacturer in the Declaration of Conformity process.

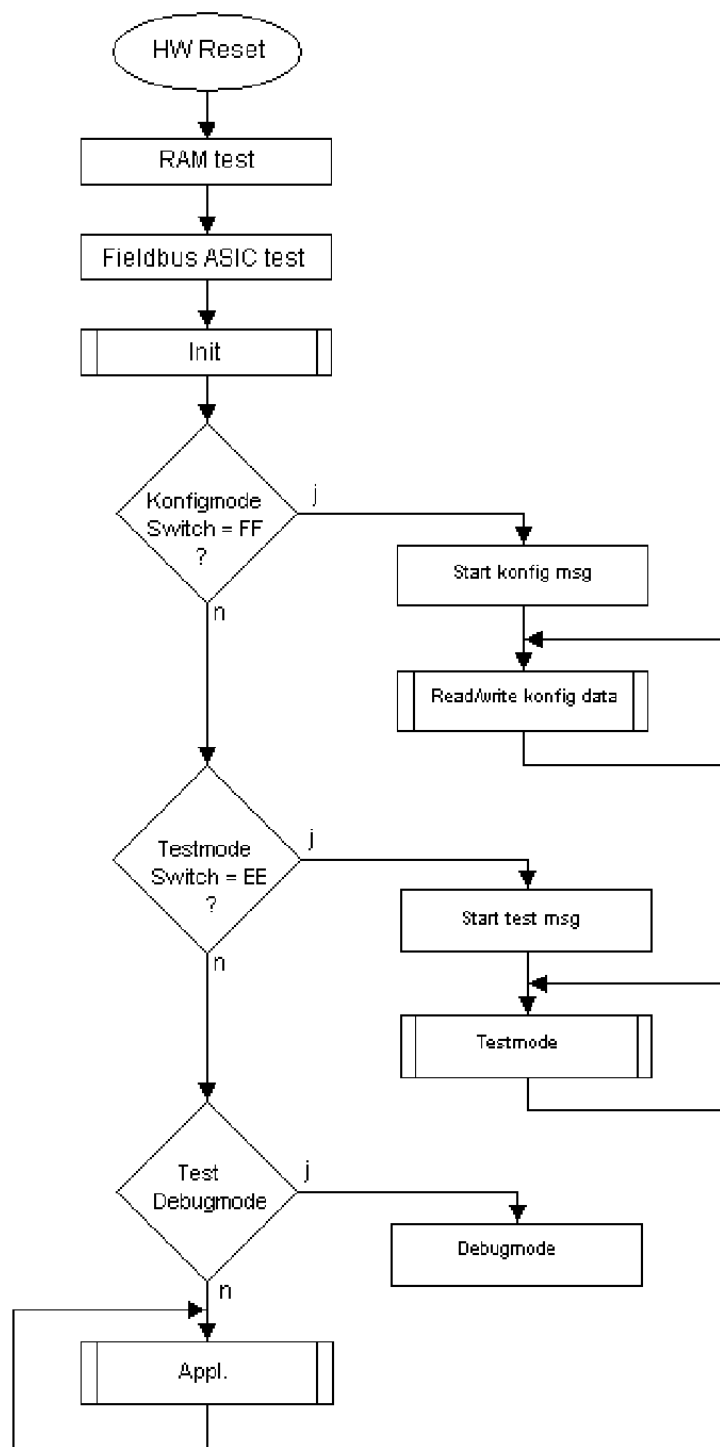
### 3 Introduction

The UNIGATE® CL-PROFIBUS DP module serves to adapt a serial port to the PROFIBUS DP to EN 50 170. In this application, it functions as a Gateway and operates as the PROFIBUS DP Slave. It can be operated by any standard-compliant Master.

The module CL-PROFIBUS DP essentially consists of the following hardware components:

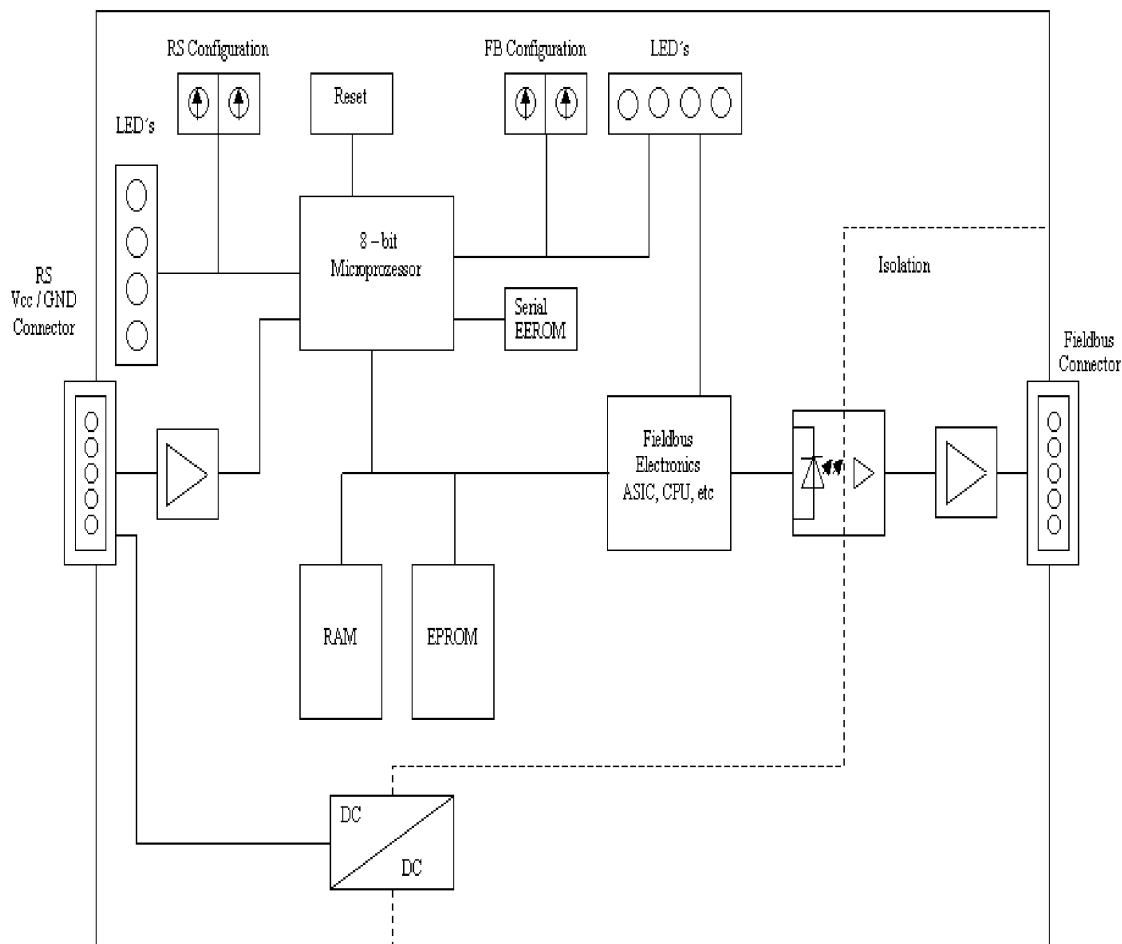
- Electrically isolated RS485 interface to the PROFIBUS DP
- PROFIBUS ASIC
- Microprocessor 89C51RD2 or 89C51RE2
- RAM and EPROM
- Optionally electrically isolated RS (application) interface
- Serial interface (RS232, RS485 and RS422) to the device connected externally
- Optional 8 I/Os

### 3.1 UNIGATE® CL software flow-chart



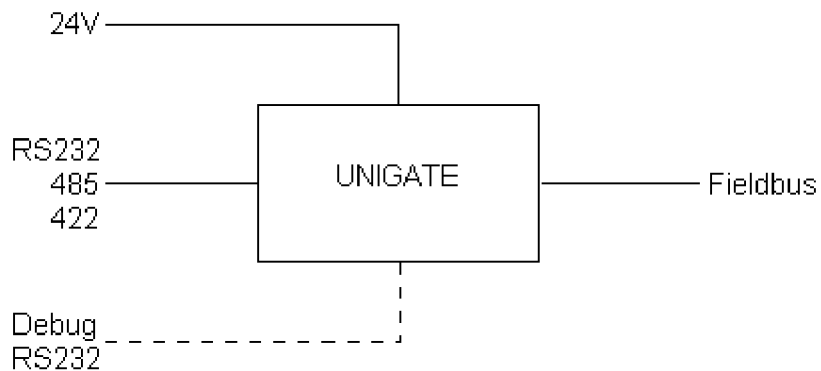
### 3.2 UNIGATE® block diagram

The following picture shows a typical UNIGATE®-module design.



### 3.3 UNIGATE® application diagram

The following graph shows a typical connection scheme.



## 4 Operation modes of the Gateway

### 4.1 Configuration mode (config mode)

The configuration mode serves to configure the Gateway. The following adjustments are possible in this mode.

- Loading a Script
- Updating the firmware
- Configuring the Gateway

The Gateway will be starting in this mode in case both switches S4 as well as S5 are set on position "F" when switching on the Gateway. Right after switching on the Gateway in the configuration mode it will be sending its starting message, that looks analog with the following message:  
„RS-PBV1-CL (232/422/485) V7.8.2[36] (c)dA Switch=0x00FF  
Script(C:8345/16128,V:7693/8192)=\"Universalscript Deutschmann\" Author=\"G/S\"  
Version=\"V 0 2y\" Date=09.01.2012 SN=47110001 ID=0“.

In the configuration mode the Gateway always operates with the settings 9600 Bauds, no Parity, 8 Databits and 1 Stopbit, the RS-State LED will always be flashing red, the "Error No/Select ID" LEDs are of no account for the user. All software revisions contain the configuration mode.

### 4.2 Test mode

#### Setting of the test mode

The test mode is set by bringing the switches S4 and S5 in position "E". All other switches will not be taken into consideration for the setting of the test mode. Now the Gateway has to be restarted with these settings (by a short disconnection from the power supply).

In the test mode the Gateway always operates with the settings 9600 baud, no parity, 8 databits and 1 stopbit.

The test mode may be helpful to integrate the Gateway in the relevant environment, for instance to test the parameters of the RS-interfaces.

#### Mode of operation of the test mode

After the restart in the test mode the Gateway will be sending the values 0-15 in hexadecimal representation ("0".."F") in ASCII-coding on the serial side every second. Simultaneously the same values are issued binary on the fieldbus-interface.

In this mode the State-LED on the RS-side will be flashing red, the "Error No/Select ID" LEDs will be displaying the value in a binary way, that is issued that moment. Additionally each character that is received at one of the interfaces will also be output at the same interface as a local echo. On the fieldbus-side only the first byte will be used for the local echo, that means on receiving as well as on transmitting only the first byte of the bus data is looked at, the other bus data do not change compared to the last data.

Note: Test mode with Option I/O8, see chapter 8.3.

### 4.3 Data exchange mode

The Gateway has to be in the data exchange mode, so that a data exchange between the RS-side of the Gateway and the fieldbus is possible. As long as the Gateway is not in the configuration mode or the test mode, the data exchange mode is active. In the data exchange mode the Gateway will execute the downloaded Script.

## 5 RS-interface

### 5.1 RS-interfaces at the UNIGATE® CL

The UNIGATE® CL - PROFIBUS DP has the interfaces RS232, RS422 and RS485 available. The hardware always features a DEBUG-interface, see chapter 7.

### 5.2 Buffer sizes at the UNIGATE® CL

UNIGATE® CL features at the serial side a buffer with the size of 1024 bytes for input data and output data each.

The FIFO of the application interface (RS-interface) can be changed in any Gateway form Script revision 26 on, that is capable for Script. For it please check in the Protocol Developer under "Device Control" - "Hardware".

### 5.3 Framing Check

The length of the stop bit received by the Gateway is checked through the function "Framing Check". Here the stop bit generated by the Gateway is always long enough, so that connected participants can evaluate the stop bit.

Please be aware that the function "Framing Check" becomes effective only in case of 8 data bit and the setting "No parity".

An error is detected and indicated by the Error LEDs in case the stop bit does not show the length 1 bit during the activated check.

The possible setting for this parameter can be controlled by the Script (see online help from Protocol Developer). The presetting for the "Stop Bit Framing Check" is "enabled".

## 6 SSI-interface

The UNIGATE® also supports the connection of applications or products, that communicate via SSI.

### 6.1 Initiation of the SSI-interface

The required Script (`example_SSI`), the firmware- (`Cust0023`) and Protocol Developer-extension (`Cust_ssi.xml`) are available free of charge from our website at [www.deutschmann.de](http://www.deutschmann.de), as well as the softwaretool Protocol Developer and the configuration software WINGATE.

- In the Protocol Developer (see chapter 7, The Debug-interface) the ConfigFile "`Cust_ssi.xml`" has to be added. At Options -> Settings -> ConfigFiles.
- Load the Script "`example_SSI.dss`" into the Protocol Developer.
- The encoder type and the clock frequency has to be defined in the Script itself under "Set number of bits" and "Set type and clock stretch value" (default = 12-Bit-Single-Turn-Gray, max. clock stretch):

```
// Set number of bits
// 1..16 = Single Turn
// 17..32 = Multi Turn
moveconst (bNumBits, 12); // i.e. 12 bit single turn
// MT SSI 4096 x 4096 = 16777216 = 0b100000000000000000000000 => 24 bit

//-----
// Set type and clock stretch value
// Type (low nibble):
// 0 = Reserved
// 1 = output value as is (i.e. binary encoder)
// 2 = convert Gray encoded output value to binary (i.e. Gray encoder)
// >2 = Reserved
//
// Clock stretch value (high nibble):
// Please note that the given frequency values are only a rough estimate. The
// exact frequency varies depending on the devices underlying architecture.
// 0 = No Stretch --> ~300 kHz
// 1 = ~185 kHz
// 2 = ~150 kHz
// 3 = ~125 kHz
// 4 = ~110 kHz
// 5 = ~100 kHz
// 6 = ~ 88 kHz
// 7 = ~ 80 kHz
// 8 = ~ 72 kHz
// 9 = ~ 67 kHz
// A = ~ 62 kHz
// B = ~ 58 kHz
// C = ~ 54 kHz
// D = ~ 50 kHz
// E = ~ 48 kHz
// F = ~ 45 kHz
//moveconst ( wTyp, 0x02); // i.e. Gray encoder, no clock stretch (High-Nibble=0)
```

moveconst ( wTyp, 0xF2); // i.e. Gray encoder, max clock stretch (High-Nibble=F)

- Load the Script into the device. Open WINGATE and activate the device in the configuration mode (see chapter 4.1, Configuration mode (config mode)) - an actuation message appears, that looks in line with the following (example CL-PB):  
Special Firmware (23) not loaded  
RS-PBV1-CL (232/422/485) V7.31[30] (c)dA Switch=0x02FF Script(8k)="SSI"  
Author="Deutschmann Automation" Version="V 1.0" Date=20.03.2008 SN=47110002 ID=2  
Konfigmode...  
The note "Special Firmware (23) not loaded" means that the firmware-extension is not yet loaded. The extension is loaded through Extras -> Firmware Script Extension. Select the file "Cust0023 (Cmd 23 + 24 for SSI).hex" and choose "write extension".
- Re-start the device -> now only the device's actual actuation message appears and not the note any more.
- Bring the device into the data exchange mode (see chapter 4.3, Data exchange mode) -> DONE!

## 6.2 Hardware-wiring

The clock wires of the SSI-interface are placed onto the Tx-wires of the RS422-interface and the data wires onto the Rx-wires at the UNIGATE® CL.

X1 (3pin + 4pin screw-plug-connector):

Pin no.	Name	Function at SSI
1	Rx 232	n. c.
2	Tx 232	n. c.
3	AP-GND	n. c.
4	Rx 422+	SSI DAT+
5	Rx 422-	SSI DAT-
6	Tx 422+	SSI CLK+
7	Tx 422-	SSI CLK-



## 7 The Debug-interface

### 7.1 Overview of the Debug-interface

The UNIGATE® features a Debug-interface, that allows a step-by-step processing of a Script. Normally this interface is only required for the development of a Script.

### 7.2 Starting in the Debug-mode

When applying power to the UNIGATE® (power up) the firmware will output the binary character 0 (0x00) after a self-test was carried out on this interface. If the UNIGATE® receives an acknowledgement via this interface within 500 ms, it is in the Debug-mode. The acknowledgement is the ASCII-character O (0x4F).

With the start in the Debug-mode the further execution of Script commands will be put to a stop.

### 7.3 Communication parameter for the Debug-interface

The Debug-interface is always operating with 9600 baud, no parity, 8 data bit, 1 stop bit. It is not possible to change this parameter in the Protocol Developer. Please consider the fact that these settings have to be in accordance with those of the PC-COM-interface and that the flow control (protocol) has to be set on „none“ there.

### 7.4 Possibilities with the Debug-interface

Usually the Protocol Developer is connected to the Debug-interface. With it a step-by-step processing of a Script, monitoring jumps and decisions and looking at memory areas is possible. Moreover breakpoints can be set. It basically possesses all characteristics a software-development tool is typically supposed to have. However, it is also possible to carry out a Scrip-update via this interface.

From Script version [27] on you can also output data with the Script command "SerialOutputToDebugInterface". Please also pay attention to the remark in the manual 'Protocol Developer'.

### 7.5 Commands of the Debug-interface

The commands for the use of the Debug-interface are described in the instruction manual Protocol Developer.

## 8 Option I/O8

Optionally, the UNIGATE® CL is available with an I/O8 extension. The Option includes 8 I/Os which can be used as desired as In- or Output.

The commands in the Script are:

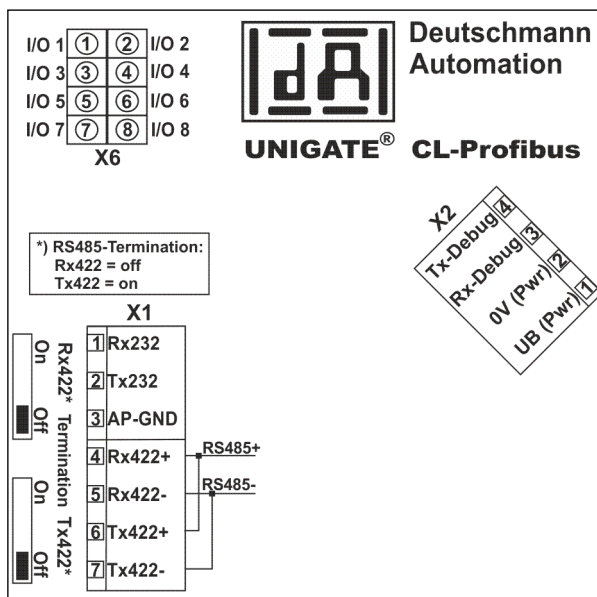
```
InitWriteMaskIO8 ( bMaskValue ) ;
WriteIO8 ( bWriteValue ) ;
ReadIO8 ( bReadValue ) ;
```



**Attention: All commands that relate to the extension do not work in the debug mode!**

Reference potential is the 0V supply voltage / DC on Pin 2 of X2.

### 8.1 Hardware-wiring



The I/Os are available at the accessible plugs on the upper site of the device.

**Pin assignment X6 (8 pin. Connector)**

Pin No.	Function
1	I/O 1
2	I/O 2
3	I/O 3
4	I/O 4
5	I/O 5
6	I/O 6
7	I/O 7
8	I/O 8



**Note:** As reference, the 0V (Pwr) DC-signal on X2 can be used.

**8.2 Technical data**

I/O 1 ... I/O8 When used as output	Every output 24V / 0,7 A (briefly 1A) at max. 3A for all 8 Outputs. Short-circuit proof.
I/O 1 ... I/O8 When used as input	Every input 24V (max. 10mA)

**8.3 Test mode I/O8**

For setting the test mode see chapter 4.2 (Test mode).

After the restart in test mode an 8-bit large value is put out on IO8 port, which is incremented by one every second. Thus IO1 changes his condition every second, IO2 every 2 seconds, IO3 every 4 seconds, ... and IO8 every 128 seconds his condition.

**8.4 LED Power / State**

This LED is controlled by the CL extension and can have the following states:

off	Normal operating mode without I/O8 - functions
bright green	Normal operating mode with I/O8
flashing green	If the I/O8 has been configured with the script command "InitWrite Mask I/O8", but NO Read- or Write command has taken place yet.
flashing red/green	UNIGATE® is in test mode
flashing red	UNIGATE® is in configuration mode / Error (see Chapter 8.5)
bright red	PC-connection active (Firmware-Update)

**8.5 Error handling at I/O8**

An error is signaled by a red flashing Power / State LED.

**Possible errors:** Error 12 - Overload. At first the LED turns red, then goes out 12 times, lights up again for a moment, and then everything starts anew.

## 8.6 Firmware I/O8 extension

The firmware version is displayed in config mode (see also chapter 4.1). The actual starting message appears, followed by the message of the extension, which looks similar to the following:

```
Ext-Board: CL-extension(24V-IO) V0.73 (c) dA SN=47110001
```

The switch position "DD" (meaning both, S4 and S5 are both in position "D") serves for the Firmware-Update. This position is transmitted to the CL-extension. The CPU of the CL-module goes mute and the CL-extension is set fixed in the boot mode, which means now a Firmware NEEDS to be loaded into the extension. The Firmware-Update can be started via the Firmware-Download-Tool FDT (Resume Download). The LED "Power / State" is bright red.

## 9 Mode of operation of the system

### 9.1 General explanation

Communication can be split into seven layers, Layer 1 to Layer 7, in accordance with the ISO/OSI model.

The Deutschmann Automation Gateways convert Layers 1 and 2 of the customized bus system (RS485 / RS232 / RS422) to the corresponding Fieldbus system. Layers 3 to 6 are blank, and Layer 7 is converted in accordance with chapter 9.3.

### 9.2 Interfaces

The Gateway features the RS232-, RS422- and RS485-interfaces.

### 9.3 Data exchange

All data is transferred by the Gateway in dependence of the downloaded Script.

### 9.4 Possible data lengths

The table below shows the maximum transferable data:

Input data	max. 244 bytes	Variable: maximum value in this case
Output data	max. 244 bytes	Variable: maximum value in this case
Parameters	8 bytes	No user parameters *
Configuration data	max. 16 bytes	Dependent on configuration *
Diagnosis	max. 8 bytes	1 user diagnostic bit = error code *

\*) Contrary to this default setting these parameters can be altered through special Script commands.

The commands can be found in the Protocol under "Bus specific"-"Profibus":

Set Profibus Config Data

Set Profibus Parameter InBuf

Set Profibus Diagnose

Further information can be found in the Protocol Developer's online help.

### 9.5 Startup phase

The Gateway is parameterized and configured by the Master during the startup phase. Only after a correct termination of the startup phase the data exchange with external devices will take place.

## 10 Generating a Script

### 10.1 What is a Script?

A Script is a sequence of commands, that are executed in that exact order. Because of the fact that also mechanisms are given that control the program flow in the Script it is also possible to assemble more complex processes from these simple commands.

The Script is memory-oriented. It means that all variables always refer to one memory area. While developing a Script you do not have to take care of the memory management though. The Protocol Developer takes on this responsibility for you.

### 10.2 Memory efficiency of the programs

A Script command can carry out e. g. a complex checksum like a CRC-16 calculation via data. For the coding of this command only 9 byte are required as memory space (for the command itself). This is only possible when these complex commands are contained in a library.

A further advantage of this library is, that the underlying functions have been in practical use for a couple of years and therefore can be described as 'void of errors'. As these commands are also present in the native code for the controller, at this point also the runtime performance of the Script is favorable.

### 10.3 What can you do with a Script device?

Our Script devices are in the position to process a lot of commands. In this case a command is always a small firmly outlined task. All commands can be put into classes or groups. A group of commands deals with the communication in general. This group's commands enable the Gateway to send and receive data on the serial side as well as on the bus-side.

### 10.4 Independence of buses

Basically the Scripts do not depend on the bus, they are supposed to operate on. It means that a Script which was developed on a PROFIBUS Gateway can also be operated on an Interbus without changes, since the functioning of these buses is very similar. In order to also process this Script on an Ethernet Gateway, perhaps further adjustments have to be made in the Script, so that the Script can be executed reasonably.

There are no fixed rules how which Scripts have to operate properly. When writing a Script you should take into account on which target hardware the Script is to be executed, so the necessary settings for the respective buses can be made.

### 10.5 Further settings at the Gateway

Most devices require no further adjustments, except for those made in the Script itself. However, there are also exceptions to it. These settings are made by means of the software WINGATE. If you know our UNIGATE®-series, you are already familiar with the proceeding with it. An example is the adjustment of the IP-address and the net-mask of an Ethernet-Gateway. These values have to be known as fixed values and are not available for the runtime. Another reason for the configuration of the values in WINGATE is the following: After an update of the Script these values remain untouched, i. e. the settings that were made once are still available after a change of the Script.

Only this way it is also possible that the same Script operates on different Ethernet-Gateways, that feature different IP-addresses.

## 10.6 The use of the Protocol Developer

The Protocol Developer is a tool for an easy generation of a Script for our Script Gateways. Its operation is exactly aimed at this use. After starting the program the Script that was loaded the last time is loaded again, provided that it is not the first start.

Typical for Windows Script commands can be added by means of the mouse or the keyboard. As far as defined and required for the corresponding command, the dialog to the corresponding command is displayed, and after entering the values the right text is automatically added to the Script. The insertion of new commands by the Protocol Developer is carried out in a way that existing commands will not be overwritten. Generally a new command is inserted in front of the one where the cursor is positioned. Of course the commands can also be written by means of the keyboard or already written commands can also be modified.

## 10.7 Accuracies of the baud rates

The baud rate of the serial interface is derived from the processor's crystal frequency.

Meanwhile all Script-Gateways are working with a crystal frequency of 40 MHz.

You can enter any desired integer baud rate into the Script. After that the firmware adjusts the baud rate, that can be derived the most precisely from the crystal frequency.

The baud rate the Gateway is actually working with (BaudIst) can be determined as follows:

$\text{BaudIst} = (\text{F32} / \text{K})$

$\text{F32} = \text{Crystal frequency [Hz]} / 32$

$\text{K} = \text{Round}(\text{F32} / \text{BaudSoll});$

Round () is a commercial roundoff

Example:

The actual baud rate is to be calculated, when 9600 baud are pre-set, where the Gateway is operated with 40 MHz:

$\text{F32} = 40000000 / 32 = 1250000$

$\text{K} = \text{Round}(1250000 / 9600) = \text{Round}(130.208) = 130$

$\text{BaudIst} = 1250000 / 130 = 9615.38$

I. e.: The baud rate actually adjusted by the Gateway is 9615.38 baud

The resulting error in per cent can be calculated as follows:

$\text{Error}[\%] = (\text{abs}(\text{BaudIst} - \text{BaudSoll}) / \text{BaudSoll}) * 100$

In our example the following error results:

$\text{Error} = (\text{abs}(9615.38 - 9600) / 9600) * 100 = 0.16\%$

In practise errors below 2% can be tolerated!

In the following please find a listing of baud rates at a 40 MHz-crystal frequency with the corresponding errors:

---

4800 baud:	0.16%
9600 baud:	0.16%
19200 baud:	0.16%
38400 baud:	1.35%
57600 baud:	1.35%
62500 baud:	0%
115200 baud:	1.35%
312500 baud:	0%
625000 baud:	0%

## 10.8 Script processing times

The Script is translated by the Protocol Developer and the consequently generated code is loaded into the Gateway. Now the processor in the Gateway interprets this code. In this case, there are commands that can be processed very fast (e. g. "Set Parameter"). There are also commands, however, that take longer (e. g. copying 1000 bytes). Consequently, for one thing the processing time differs due to the kind of Script command. But the processing time of the Script commands is considerably more determined by the processor time that is available for this process. Since the processor has to carry out several tasks simultaneously (multitasking system) only a part of the processor's capacity is available for the Script processing. The following tasks - in the order of priority - are executed on the processor:

- Sending and receiving data at the Debug-interface (provided that the Protocol Developer has been started on the PC)
- Sending and receiving data at the RS-interface
- Sending and receiving data at the Fieldbus-interface
- Tasks controlled via internal clock (1 ms) (e. g. flashing of an LED)
- Processing of the Script

From experience approximately 0.5 ms can be calculated for each Script line. This value confirmed itself again and again in many projects as a standard value. He is always quite right if the processor has enough time available for the Script processing.

By means of the tasks mentioned above, the following recommendation can be formulated in order to receive a rather fast Script processing:

- Deactivate the Debug-interface (it is the normal case in the serial use)
- Keep the data length at the RS-interface as small as possible. The baud rate is not the problem here, but the amount of characters which are transferred per second.
- Do not unnecessarily extend the data length at the Fieldbus side. Especially at acyclical bus data, if possible do only send them when changes were made. The data length at buses that are configured to a fixed length (e. g. Profibus) should not be longer than absolutely necessary.

If the processing time should be too large in spite of these measures, there is the possibility to generate a customized Script command, that executes several tasks in one Script command. Please contact our support department for this purpose.



## 11 Implemented protocols in UNIGATE® CL with Universal Script

UNIGATE® CL is supplied with the Script "Universal Script Deutschmann". The configuration of the protocols is carried out by means of the software WINGATE. See "Instructions UNIGATE® CL - Configuration with WINGATE". The PDF can also be found on our website under Support/Support/Downloads/Manuals.



### Attention:

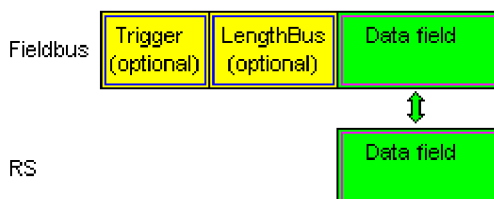
If a Reset Device is carried out it is possible (depending on the firmware version of the UNIGATE®) that the "Universal Script" will get lost and must be played in again.

The Script can be found on the Deutschmann Support-DVD in the folder \Software\ProtocolDeveloper\Example\Universal\.

### 11.1 Protokoll: Transparent

The data is transferred bidirectional from the UNIGATE®.

#### 11.1.1 Data structure



On the RS-entry side the timeout time of 2 ms is firmly set. If no more data is received within the timeout period, then the data that has been received so far is transferred to the bus.

If less data is received through Rx then configured by the GSD-file (I/O-length), then the rest is complemented with ZERO.

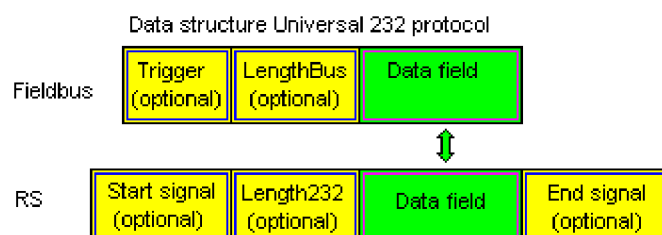
Too much data received will be cut off.

### 11.2 Protocol: Universal 232



The protocol designation "Universal 232" and the relation to the "RS232-interface" in the description have evolved over the years. The protocol also works with RS422 and RS485 though!

#### 11.2.1 Data structure



### 11.2.2 Fieldbus parameters

Trigger byte: See "The trigger byte", Chapter 11.5, on page 30

Length byte: See "The length byte", Chapter 11.6, on page 30

### 11.2.3 RS232 parameter table

#### 11.2.3.1 Start character (232 Start character)

If this character is defined, the gateway evaluates only the data at the RS232 interface following this start character. Each transmission from the gateway via the RS232 interface is initiated with the start character in this case.

#### 11.2.3.2 Length 232 (232 Length)

If this byte is activated, the gateway, at the receive end, awaits as many bytes of useful data as specified in this byte by the RS232 transmitter. At the transmission end, the gateway then sets this byte to the number of useful data items transmitted by it. If byte "Length232" is not defined, the gateway, on reception at the RS232 interface, waits for the end criterion if this is defined. If no end criterion is defined either, as many characters as can be transferred in the fieldbus transmit buffer are read in via the RS232 interface.

As a special case for this parameter also a length byte with additional Timeout monitoring can be set in WINGATE. In that case the received characters will be discarded at a Timeout.



**Attention:**

*If "Timeout" is selected as end character, then this byte has no significance.*

#### 11.2.3.3 End character (232 End character)

If this character is defined, the gateway receives data from the RS232 interface up to this character. The "Timeout" criterion can be defined as a special case. In this case, the gateway continues to receive characters until a defined pause occurs. In the special case "Timeout" the "Length 232-byte" has no significance. At the transmit end, the gateway inserts the end character, if defined, as the last character of a transmission.

### 11.2.4 Communication sequence

The useful data (data area) arriving via the fieldbus is copied in accordance with chapter 11.2.1 transparently into the RS232 data field and transferred via the RS interface, whereby the protocol is supplemented in accordance with the configuration (start character, end character...). NO acknowledgement is issued !

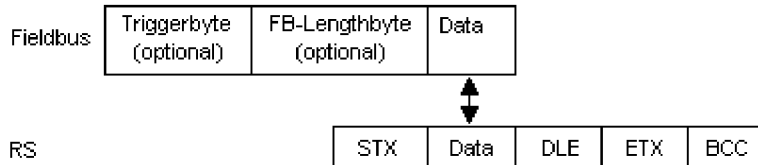
If the "Trigger byte" (see chapter 11.5) is active, data is sent only on a change of this byte. If the "Length byte" (see chapter 11.6) is active, only as many of the following bytes as specified there are transferred.

Receive data at the RS interface is evaluated in accordance with the configured protocol, and the data field (data area (see chapter 11.2.1)) is sent to the fieldbus Master. If more characters have been received than the fieldbus block length, the trailing bytes are truncated and an Rx Overrun is indicated. If less have been received, padding with 0 occurs. If the "Length byte" is active, the number of received useful data items is entered there. If the, "Trigger byte" is active, this is incremented by one after each complete reception operation at the RS interface.

## 11.3 Protocol: 3964(R)

The 3964 protocol is used to transfer data between two serial devices. One partner must be a high-priority partner and the other must be a low-priority partner in order to resolve initialisation conflicts.

### 11.3.1 Data structure 3964R



### 11.3.2 Protocol definitions

The telegram format is as follows:

STX	Data	DLE	ETX	BCC
-----	------	-----	-----	-----

- The received net data is forwarded (transparently) in both directions unchanged.  
**Attention:** The DLE-doubling is excluded from it; that means one DLE (10H) on the bus-side is sent on the RS-side twice. A double DLE on the RS-side is only sent once to the bus-master.
- Data blocking is not scheduled.
- The net data length is restricted to 236 bytes per telegram.
- Communication always runs between high-priority and low-priority communication partners.

### 11.3.3 Data communication

#### 11.3.3.1 Initiation of data communication by the low-priority user

If the low-priority user also receives an STX in response to a transmitted STX, it interrupts its transmit request, reverts to Receive mode and acknowledges the received STX with DLE.

A DLE in the data string is duplicated and included in the checksum. The BCC is computed from XORing all characters.

#### 11.3.3.2 Conflicts

#### 11.3.3.3 Timeout times

The timeout times are preset by the definition of the 3964R protocol and cannot be overwritten !!!  
 tq = acknowledgement timeout time (2 s).

The acknowledgement timeout time is started after transmission of control character STX. If no positive acknowledgement arrives within the acknowledgement timeout time, the job is repeated (max. 2 x). If it has not been possible to complete the job positively after two repetitions, the high-priority device nevertheless attempts to establish contact with the low-priority partner by transmitting STX (cycle corresponds to tq).

tz = character timeout time ( 200 ms)

If the 3964 R driver receives data, it monitors arrival of the individual characters within period tz. If no character is received within the timeout time, the protocol terminates transfer. No acknowledgement is sent to the coupling partner.

#### 11.3.3.4 Retries

In the event of negative acknowledgement or timeout, a telegram transmitted by the high-priority user is repeated twice. After this, the gateway signals communication as disturbed but still attempts to re-establish the connection.

#### 11.3.3.5 Initiation of data communication by the high-priority user

In the case of a negative acknowledgement or timeout, a telegram transmitted by the external device is repeated twice before a fault is signalled.

#### 11.3.4 Protocol type 3964

The difference to protocol type 3964R is:

1. tq = acknowledge monitoring time
2. The checksum byte BCC is missing.

### 11.4 Protocol: MODBUS-RTU

#### 11.4.1 Notes

- For reasons of simplicity, "MODBUS-RTU" is referred to as "MODBUS" in the text below.
- The terms "input" and "output" are always viewed from the gateway's point of view, i.e. fieldbus input data is the data sent by the fieldbus Master to the gateway.

#### 11.4.2 UNIGATE® as MODBUS-Master

##### 11.4.2.1 Preparation

Before data exchange is commenced, the parameters "Baud rate", "Parity", "Start bits", "Stop bits" and "Data bits" and, if applicable, the "Trigger byte" and the "Length byte" must be set.

In addition, a "Response time" which corresponds to the maximum time up to which the Modbus Slave responds after a request must be set. UNIGATE® multiplies the value entered in WINGATE by 10 ms.

Since the Modbus operates with a variable data format - dependent on the required function and data length - but since the fieldbus requires a fixed data length, this must be preset by means of a selection in the GSD file (input and output are identical). This length should be selected by the user such that the longest Modbus request resp. response can be processed.

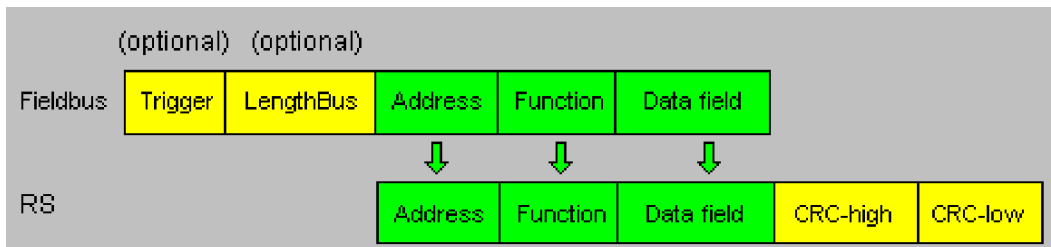
The user can choose whether the fieldbus requests are forwarded to the Modbus in case of a change (On Change) or on request (On Trigger).

In "Change" mode, detection of a change is based on the fact that the fieldbus data is compared with that of the last transmission, and a request is issued by the Modbus only in the case of a change.

The mode "Modbus request on demand" necessitates the first byte in the fieldbus containing a trigger byte (see chapter 11.5). This byte is not transferred to the Modbus and serves only to start a Modbus transmission. For this purpose, the gateway constantly monitors this trigger byte and sends data to the Modbus only when this byte has changed. In the reverse direction (to the fieldbus), the gateway transfers the number of received Modbus data records in this byte, i.e. this byte is incremented by the gateway after each data record.

If the "Length byte" is activated (see chapter 11.6), the gateway transfers only the number of bytes specified there. The number of received Modbus data items is saved in the direction of the fieldbus Master. The length always refers to bytes "Address" to "Data n" (inclusive in each case), always without CRC checksum.

#### 11.4.2.2 Data structure



#### 11.4.2.3 Communication sequence

The gateway always acts as the Slave with respect to the fieldbus and always acts as the Master at the Modbus end. Thus, data exchange must always be started by the fieldbus Master. The gateway fetches this data which must be structured in accordance with chapter "Data structure", from the fieldbus Master, determines the valid length of the Modbus data if the length byte is not activated, adds the CRC checksum and sends this data record as a request on the Modbus.

The response of the selected Slave is then sent to the fieldbus Master by the gateway - without CRC checksum. If no response occurs within the stipulated "Response time", the gateway signals a "TIMEOUT ERROR".

### 11.4.3 UNIGATE® as MODBUS-Slave

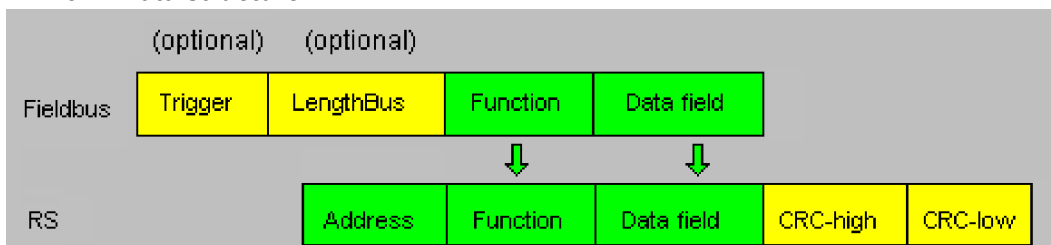
#### 11.4.3.1 Preparation

Before data exchange is commenced, the parameters "Trigger byte" and "Length byte", "Baud rate", "Parity", "Start bits", "Stop bits" and "Data bits" must be set.

At the rotary switch on the RS-side the MODBUS-ID has to be set, under which the gateway is addressed in the Modbus.

Since the Modbus operates with a variable data format - dependent on the required function and data length - but since the fieldbus requires a fixed data length, this must be preset by means of a selection in the GSD file. This length should be selected by the user such that the longest Modbus request resp. response can be processed.

#### 11.4.3.2 Data structure



#### 11.4.3.3 Communication sequence

The gateway always acts as the Slave with respect to the fieldbus and also acts as Slave at the Modbus end. A data exchange is always initiated by the MODBUS-Master via the RS-interface. If the Modbus-address (1st Byte) which is sent out by the Modbus-Master is identical with the address set on the gateway, the gateway sends the received data (without Modbus-address and CRC-check sum) to the fieldbus-master (look picture above). With it the gateway optionally completes as an introduction a Trigger byte and a Length byte.

The fieldbus-master detects when it has to analyse a record via the Trigger byte which is incremented by the gateway at every inquiry. The number of the following Modbus-data is to be found in the length byte.

Now the fieldbus-master has to analyse the Modbus-inquiry and it has to send back the answer in the same format (optionally with the leading Trigger byte and Length byte) via the fieldbus to the gateway.

The gateway then takes this answer and completes the Modbus-address and the CRC and sends the data to the Modbus-Master via the RS-interface. With it the data exchange is completed and the gateway waits for a new inquiry from the Modbus-Master.

#### 11.4.4 UNIGATE® as Modbus-ASCII Master

On request!

-> For the description see chapter 11.4.2 "UNIGATE® as MODBUS-Master"

### 11.5 The trigger byte

Since the data is always transferred cyclically on PROFIBUS, the gateway must detect when the user wishes to send new data via the serial interface. This is normally done by the gateway comparing the data to be transferred via the PROFIBUS with the old data stored internally - data exchange on change (data exchange -> On Change). In many cases however, this cannot be used as the criterion, e.g. whenever the same data is to be sent. For this reason, the user can set control of transmission via a trigger byte (data exchange -> On Trigger). In this mode, the gateway always sends (and only then) when the trigger byte is changed.

Accordingly, the application program in the control in Normal mode cannot detect whether the gateway has received several identical telegrams. If Trigger-Byte mode is activated, the gateway increments the trigger byte each time a telegram has been received.

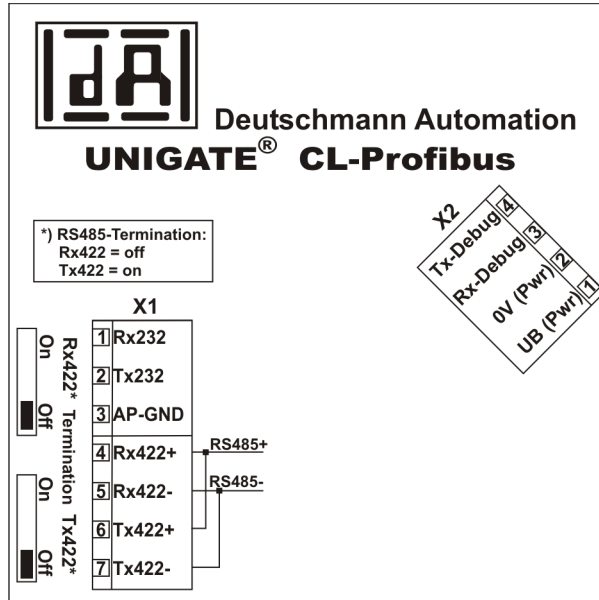
The first byte in the PROFIBUS input/output data buffer is used as the trigger byte if this mode is activated.

### 11.6 The length byte

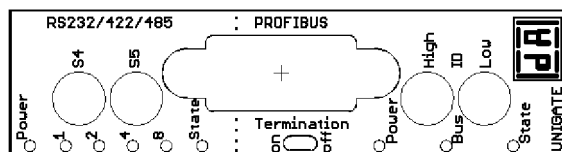
The user can configure whether the transmit length is also to be stored as a byte in the input/output data area (Fieldbus lengthbyte -> active). In transmit direction, as many bytes as specified in this byte are sent. On reception of a telegram the gateway enters the number of characters received.

## 12 Hardware ports, switches and LEDs

### 12.1 Device labeling



Picture 1: Terminal labeling and termination



Picture 2: Front panel: Rotary switches, LEDs and termination PB



In case the front panel should pop out it does not affect the device's function or quality. It can be put in again without problems.

### 12.2 Connectors

#### 12.2.1 Connector to the external device (RS-interface)

The serial interface is available at the plug accessible on the upper side of the device.

Pin assignment X1 (3-pole and 4-pole screw-type plug connector)

Pin No.	Name	Function
1	Rx 232	Receive signal
2	Tx 232	Transmit signal
3	AP-GND	Application Ground
4	Rx 422+ (485+)	Receive signal
5	Rx 422- (485-)	Receive signal
6	Tx 422+ (485+)	Transmit signal
7	Tx 422- (485-)	Transmit signal



For the operation at a 485-interface the two pins labeled "485-" have to be connected together.  
Also the two pins "485+".

### 12.2.2 Connector supply voltage and DEBUG-interface

Pin assignment X2 (4-pole screw-plug connector, on the bottom side, at the back)

Pin No.	Name	Function
1	UB (Pwr)	10..33 V supply voltage / DC
2	0 V (Pwr)	0 V supply voltage / DC
3	Rx-Debug	Receive signal Debug
4	Tx-Debug	Transmit signal Debug



#### Attention:

At isolated devices (option GT) Ground for the DEBUG-Interface must be connected with pin 3 (AP-GND) of the RS-interface!  
At devices that are not isolated also the 0V (Pwr)-signal can be used as reference.

### 12.2.3 PROFIBUS DP-connector

The plug (labeled: PROFIBUS) for the connection to PROFIBUS is available on the front side of the device.

Pin assignment (9-pole D-SUB, socket)

Pin No.	Name	Function
1	Shield	
2		
3	B	Not inverting input-/output-signal from PROFIBUS
4	CNTR-P	Control signal / repeater
5	M5	DGND-data reference potential
6	P5	5 V supply voltage
7		
8	A	Inverting input-/output-signal from PROFIBUS
9		



For the operation at a 485-interface the two pins labeled "485-" have to be connected together.  
Also the two pins "485+".

### 12.2.4 Power supply

The device must be powered with 10-33 VDC, The voltage supply is made through the 4-pole screw-plug connector at the device's bottom side.

Please note that the devices of the series UNIGATE® should not be operated with AC voltage.



## 12.3 LEDs

The Gateway UNIGATE® CL - PROFIBUS features 9 LEDs with the following significance:

LED (Bus) Power	green	Supply voltage PROFIBUS
LED Bus	red	PROFIBUS error
LED (Bus) State	red/green	Interface state PROFIBUS
LED Power	green	Supply voltage serial interface
LED State	red/green	User-defined / general Gateway error
LEDs 1 / 2 / 4 / 8 (Error No. / Select ID)	green	User-defined / general Gateway error

### 12.3.1 LED "(Bus) Power"

This LED is connected directly to the electrically isolated supply voltage of the PROFIBUS-side.

### 12.3.2 LED "Bus"

This LED is directly controlled by the PROFIBUS ASIC and goes out in the state "DATA EXCHANGE".

### 12.3.3 LED "(Bus) State"

Lights green	PROFIBUS in the state data exchange
Flashes green	Gateway waits for PROFIBUS communication data
Flashes green/red	Gateway waits for PROFIBUS parameter data
Lights red	General PROFIBUS error

### 12.3.4 LED "Power"

This LED is connected directly to the (optionally also electrically isolated) supply voltage of the serial interface (RS232/422/485).

**Note:** With the Option I/O8 the LED can take more states (see also chapter 8.4).

### 12.3.5 LED "State"

Lights green	Controllable via Script
Flashes green	Controllable via Script
Flashes green/red	Controllable via Script
Lights red	General Gateway error (see LEDs Error No.), controllable via Script
Flashes red	UNIGATE is in the configuration / test mode, controllable via Script

### 12.3.6 LEDs 1 / 2 / 4 / 8 (Error No. / Select ID)

If these 4 LEDs flash and LED "State" simultaneously lights red, the error number is displayed in binary notation (conversion table, see Annex) in accordance with the table in chapter "Error handling".

## 12.4 Switches

The Gateway features 7 switches with the following functions:

Termination Rx 422	switchable Rx 422-terminating resistor for the serial interface
Termination Tx 422	switchable Tx 422- or RS485-terminating resistor for the serial interface
Rotary coding switch S4	ID High for serial interface i. e. configmode
Rotary coding switch S5	ID Low for serial interface i. e. configmode
Termination (Profibus)	switchable ProfibusDP-terminating resistor

Rotary coding switch High	Profibus-ID (high byte)
Rotary coding switch Low	Profibus-ID (low byte)

#### 12.4.1 Termination Rx 422 + Tx 422 (serial interface)

If the Gateway is operated as the physically first or last device in an RS485-bus or as 422, there must be a bus termination at this Gateway. In order to do this the termination switch is set to position ON. The resistor (150  $\Omega$ ) integrated in the Gateway is activated. In all other cases, the switch remains in position OFF.

Please refer to the general RS485 literature for further information on the subject of bus terminations.

If the integrated resistor is used, please allow for the fact that this also activates a pull-down resistor (390  $\Omega$ ) to ground and a pull-up resistor (390  $\Omega$ ) to VCC.



**At RS48 only the Tx 422-switch must be set to ON.  
The Rx 422-switch has to be on OFF.**

#### 12.4.2 Rotary coding switches S4 + S5 (serial interface)

These two switches can be read out through the Script command "Get (RS\_Switch, Destination)" and the value can be used for further functions. This value is read in when the Gateway is switched on or always after a Script command has been executed. The switch positions "EE" (testmode) and "FF" (config mode) are not possible for RS422- or RS485-operation.

**Note:** The switch position "DD" (ie, S4 and S5 in position "D") is reserved for internal purposes.

#### 12.4.3 Termination (Profibus)

If the Gateway is operated as the first or last physical device in the PROFIBUS DP, there must be a bus termination at this Gateway. In order to do this, either a bus terminating resistor must be activated in the connector or the resistor (220  $\Omega$ ) integrated in the Gateway must be activated. In order to do this, slide the slide switch to position ON. In all other cases, the slide switch must remain in position OFF. Please refer to the general PROFIBUS literature for further information on the subject of bus termination.

Note: To activate or deactivate the bus termination, please remove the bus-connector and carefully set the switch to the desired position.

#### 12.4.4 Rotary coding switches High + Low (PROFIBUS-ID)

With these two switches the Gateway's Profibus-ID (00... 7D) is set in hexadecimal notation. Please refer to the Annex for a conversion table from decimal to hexadecimal. This value is read in only once when the Gateway is activated. The value can also be read-out or analyzed through the Script command "Get (FieldbusID, LongTemp)".  
See also chapter 17.6.

### 12.5 The Debug cable for UNIGATE® CL

As accessory a pre-configured Debug cable is available. The Debug cable connects the Gateway to Debug and RS.

## 13 Error handling

### 13.1 Error handling at UNIGATE® CL

If the Gateway detects an error, the error is signalled by the "State" LED lighting red and, simultaneously, the error number being indicated by means of LEDs "Error No." as shown in the table below. A distinction can be made between two error categories:

Serious errors (1-5): In this case, the Gateway must be switched off and switched back on again. If the error occurs again, the Gateway must be exchanged and returned for repair.

Warnings (6-15): These warnings are displayed for one minute simply for information purposes and are then automatically reset. If such warnings occur frequently, please inform After-Sales Service.

For user-defined errors the flash frequency is 0.5 hertz. The error is displayed as long as defined by "Set Warning Time".

In the configuration mode these displays are not valid and only meant for internal use.

LED8	LED4	LED2	LED1	Error no. resp. ID	Error description
0	0	0	0	0	Reserved
0	0	0	1	1	Hardware fault
0	0	1	0	2	EEROM error
0	0	1	1	3	Internal memory error
0	1	0	0	4	Fieldbus hardware error or wrong Fieldbus-ID
0	1	0	1	5	Script error
0	1	1	0	6	Reserved
0	1	1	1	7	RS-transmit buffer overflow
1	0	0	0	8	RS-receive buffer overflow
1	0	0	1	9	RS timeout
1	0	1	0	10	General fieldbus error
1	0	1	1	11	Parity-or frame-check-error
1	1	0	0	12	Reserved
1	1	0	1	13	Fieldbus configuration error
1	1	1	0	14	Fieldbus data buffer overflow
1	1	1	1	15	Reserved

Table 1: Error handling at UNIGATE® CL

## 14 Installation guidelines

### 14.1 Installation of the module

The module with the dimensions 23 x 117 x 111 mm resp. 23 x 117 x 117 mm with Option I/O8 (W x D x H) has been developed for switch cabinet use (IP 20) and can thus be mounted only on a standard mounting channel (deep DIN-rail to EN 50022).

#### 14.1.1 Mounting

- Engage the module from the top in the top-hat rail and swivel it down so that the module engages in position.
- Other modules may be rowed up to the left and right of the module.
- There must be at least 5 cm clearance for heat dissipation above and below the module.
- The standard mounting channel must be connected to the equipotential bonding strip of the switch cabinet. The connection wire must feature a cross-section of at least 10 mm<sup>2</sup>.

#### 14.1.2 Removal

- First disconnect the power supply and signal lines.
- Then push the module up and swivel it out of the top-hat rail.

Vertical installation

The standard mounting channel may also be mounted vertically so that the module is mounted turned through 90°.

### 14.2 Wiring

#### 14.2.1 Connection systems

The following connection systems must resp. may be used when wiring the module:

- Standard screw-type/plug connection (power supply + RS)
- 9-pin D-SUB plug connector (PROFIBUS DP)

a) In the case of standard screw-type terminals, one lead can be clamped per connection point. It is best to then use a screwdriver with a blade width of 3.5 mm to firmly tighten the screw.

Permitted cross-sections of the line:

- Flexible line with wire-end ferrule: 1 x 0.25 ... 1.5 mm<sup>2</sup>
- Solid conductor: 1 x 0.25 ... 1.5 mm<sup>2</sup>
- Tightening torque: 0.5 ... 0.8 Nm

b) The plug-in connection terminal strip is a combination of standard screw-type terminal and plug connector. The plug connection section is coded and can thus not be plugged on the wrong way round.

c) The 9-pin D-SUB plug connector is secured with two screws with "4-40-UNC" thread. It is best to use a screwdriver with a blade width of 3.5 mm to screw the screw tight.  
Tightening torque: 0.2... 0.4 Nm

##### 14.2.1.1 Power supply

The device must be powered with 10..33 V DC.

- Connect the supply voltage to the 4-pole plug-in screw terminal in accordance with the labelling on the device.

#### 14.2.1.2 Equipotential bonding connection

The connection to the potential equalization automatically takes place if it is put on the DIN-rail.

### 14.2.2 PROFIBUS DP communication interface

#### 14.2.2.1 Bus line with copper cable

This interface is located on the module in the form of a 9-pin D-SUB socket on the front side of the housing.

- Plug the PROFIBUS connector onto the SUB-D socket labelled "PROFIBUS DP".
- Firmly screw the securing screws of the plug connector tight using a screwdriver.
- If the module is located at the start or end of the PROFIBUS line, you must connect the bus terminating resistor integrated in the gateway. In order to do this, slide the slide switch to the position labelled ...on...
- If the module is not located at the start or at the end, you must set the slide switch to position "off".

#### 14.2.3 Line routing, shield and measures to combat interference voltage

This chapter deals with line routing in the case of bus, signal and power supply lines, with the aim of ensuring an EMC-compliant design of your system.

#### 14.2.4 General information on line routing

- Inside and outside of cabinets

In order to achieve EMC-compliant routing of the lines, it is advisable to split the lines into the following line groups and to lay these groups separately.

- ⇒ Group A:
  - shielded bus and data lines (e. g. for PROFIBUS DP, RS232C and printers etc.)
  - shielded analogue lines
  - unshielded lines for DC voltages  $\geq 60$  V
  - unshielded lines for AC voltage  $\geq 25$  V
  - coaxial lines for monitors
- ⇒ Group B:
  - unshielded lines for DC voltages  $\geq 60$  V and  $\geq 400$  V
  - unshielded lines for AC voltage  $\geq 24$  V and  $\geq 400$  V
- ⇒ Group C:
  - unshielded lines for DC voltages  $> 400$  V

The table below allows you to read off the conditions for laying the line groups on the basis of the combination of the individual groups.

	Group A	Group B	Group C
Group A	1	2	3
Group B	2	1	3
Group C	3	3	1

Table 3: Line laying instructions as a function of the combination of line groups

- 1) Lines may be laid in common bunches or cable ducts.
- 2) Lines must be laid in separate bunches or cable ducts (without minimum clearance).
- 3) Lines must be laid in separate bunches or cable ducts inside cabinets but on separate cable racks with at least 10 cm clearance outside of cabinets but inside buildings.

#### 14.2.4.1 Shielding of lines

Shielding is intended to weaken (attenuate) magnetic, electrical or electromagnetic interference fields.

Interference currents on cable shields are discharged to earth via the shielding bus which is connected conductively to the chassis or housing. A low-impedance connection to the PE wire is particularly important in order to prevent these interference currents themselves becoming an interference source.

Wherever possible, use only lines with braided shield. The coverage density of the shield should exceed 80%. Avoid lines with foil shield since the foil can be damaged very easily as the result of tensile and compressive stress on attachment. The consequence is a reduction in the shielding effect.

In general, you should always connect the shields of cables at both ends. The only way of achieving good interference suppression in the higher frequency band is by connecting the shields at both ends.

The shield may also be connected at one end only in exceptional cases. However, this then achieves only an attenuation of the lower frequencies. Connecting the shield at one end may be more favorable if

- it is not possible to lay an equipotential bonding line
- analogue signals (a few mV resp. mA) are to be transmitted
- foil shields (static shields) are used.

In the case of data lines for serial couplings, always use metallic or metallized plugs and connectors. Attach the shield of the data line to the plug or connector housing.

If there are potential differences between the earthing points, a compensating current may flow via the shield connected at both ends. In this case, you should lay an additional equipotential bonding line.

Please note the following points when shielding:

- Use metal cable clips to secure the shield braiding. The clips must surround the shield over a large area and must have good contact.
- Downstream of the entry point of the line into the cabinet, connect the shield to a shielding bus. Continue the shield as far as the module, but do not connect it again at this point!

## 15 PROFIBUS DP

### 15.1 Description of the DPV1-/DPV2-functions

#### 15.1.1 DPV1

Die DPV1-Erweiterung besteht aus folgenden Funktionen:

*1. Acyclic data exchange with Class1-Master (e. g.: PLC)*

This function is optional for a DPV1-Slave. Our gateways support this function as a default. By means of this function the Class1-Master can read and write data from the slave acyclically. This data is processed by the script in the gateway. The channel for the acyclic data exchange is set up firmly during the parameterization.

*2. Acyclic data exchange with Class2-Master (e. g.: control unit)*

This option is optional for a DPV1-Slave as well. Our gateways support this function as a default. By means of this function the Class2-Master can read and write data from the slave acyclically. This data is processed by the script in the gateway. The channel for the acyclic data exchange is set up prior to every data exchange and closed again afterwards.

*3. Alarm handling*

Also the alarms are optional. If they are activated, they replace the device-specific diagnosis. At present our gateway does not support alarms.

Every DPV1-Slave must support the extended parameterization since it is determined in Octet 8 of the parameterization telegram whether it is a DPV0- or a DPV1-Slave.

A DPV1-Slave can also be operated at a DPV0-Master if the DPV1-functions remain turned off.

#### 15.1.2 DPV2

Die DPV2-enlargement consists of the following functions:

*1. Isochron Mode (IsoM)*

It means the clock-synchronous behavior of a bus system. This function is optional for a DPV2-Slave and is activated via the GSD-file. At present our gateway does not support this mode.

*2. Data Exchange Broadcast (DxB)*

It means the communication between Slaves (inter-communication). This function is optional for a DPV2-Slave and is activated via the GSD-file. At present our gateway only supports the function of the „Publisher“ (sending data to other Slaves). The function „Subscriber“ (receiving data from other Slaves) is not supported at present.

*3. Up- And Download*

This function is also optional for a DPV2-Slave and at present it is not supported by our gateway.

*4. Time-synchronization (Time stamp)*

This function is also optional for a DPV2-Slave and at present it is not supported by our gateway.

*5. Redundancy concept*

This function is also optional for a DPV2-Slave and at present it is not supported by our gateway.

### 15.2 Representation of the data in PROFIBUS DP

Any standard-compliant PROFIBUS DP Master can exchange data with the gateway. It is also possible to use very "simple" Master connections owing to the data structure.

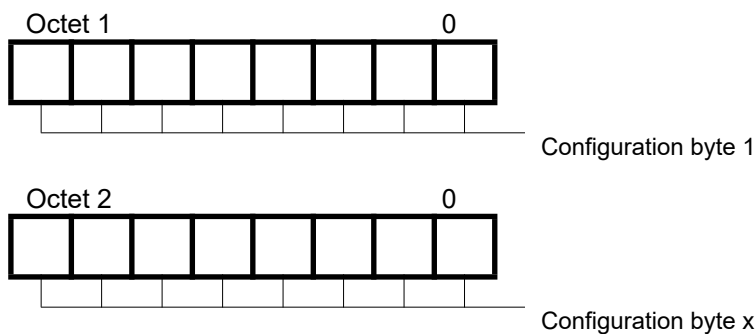
### 15.2.1 Configuration telegram

After programming, the Master must send a configuration telegram to the corresponding Slave. The configuration telegram provides the Slave with information on the length of the input/output data. If the user has set the 'Length byte' flag, this means the maximum data lengths. Otherwise, it means the actual lengths.

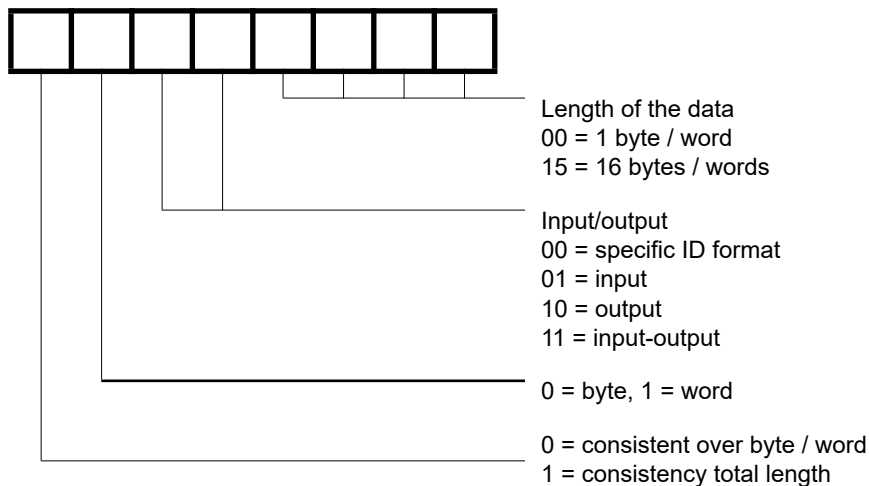
The user normally also configures the configuration telegram in the project planning tool where he may also, if necessary, enter the address range in which the useful data is stored.

You can write up to 16 bytes or words in one octet of the DataUnit (DU). Inputs and outputs having the same format can be combined in one octet. Otherwise, you must use as many octets as the number of different bytes/words you wish to use and which cannot be combined in one octet. If the module detects, during the check, that the maximum permitted input/output data lengths have been exceeded, it signals incorrect configuration to the Master during a subsequent diagnostic scan. It is then not ready for useful data communication.

### 15.2.2 Configuration telegram



Structure of an octet in the configuration telegram:



### 15.2.3 Diagnosis

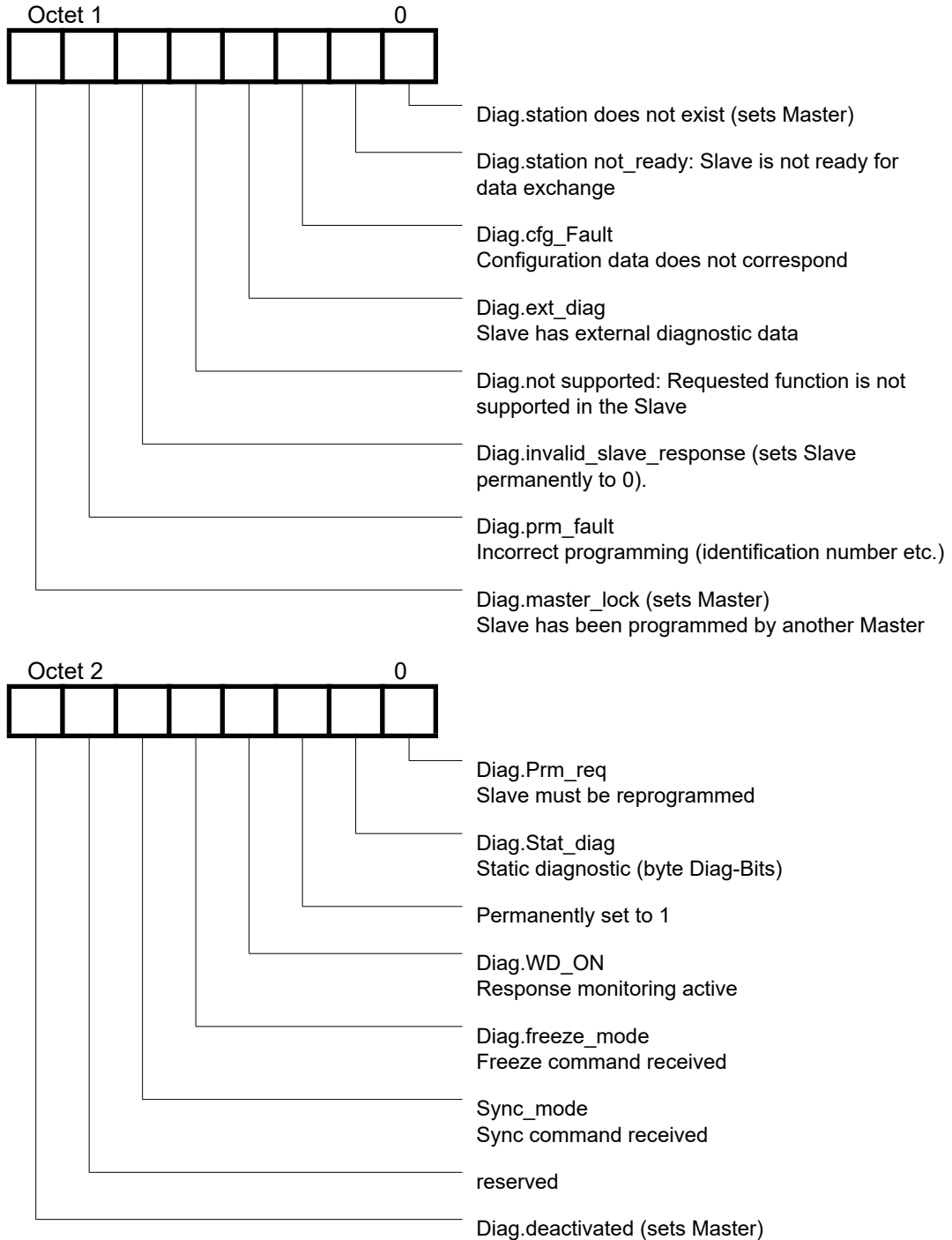
Diagnostic data is high-priority data. The gateway runs an external diagnostic if it detects an internal error.

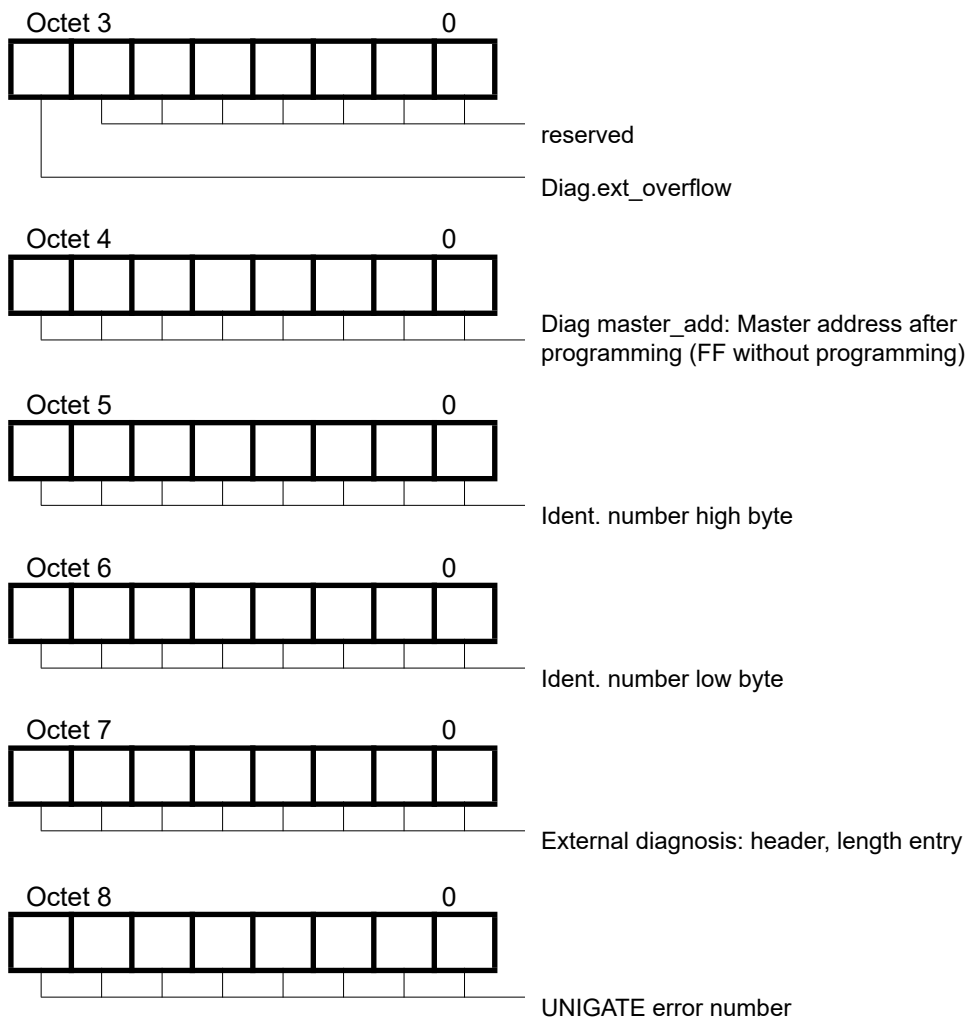
Representation of the information in the external diagnostic byte:



The diagnostic information of a DP Slave consists of standard diagnostic information items (6 bytes) and a user-specific diagnostic information item. (Error number)

Telegram for diagnostic request:





### 15.2.3.1 Diagnosis in DPV1

The "external diagnosis" of DPV0 (old PB) is used differently at DPV1. At DPV1 the alarms and the status messages are transferred there. Since the gateway's error numbers have been transferred in the external diagnosis it became necessary then to carry out an adaptation at DPV1. Now the 3 bytes "0x81, 0x00, 0x00" have been inserted in front of the actual error message in order to be compatible with DPV1-masters. With it a DPV1-master identifies our gateway's error as status message now.

This results in a different representation of our gateway error in PROFIBUS. At DPV0 the error number is transmitted in unmodified form as 1 byte external diagnosis. In case DPV1 has been activated in the gateway through the GSD-file, the error number occurs as 1 byte status message.

Supposing the DPV1 is activated and a master (which does not support the alarms and status messages) is connected, then our gateway error number is presented as "external diagnosis" with 4 bytes (see above), at which point the 4th byte contains the error number and the preceding 3 bytes (0x81, 0x00, 0x00) can be ignored.

### **15.2.4 Data exchange**

After the Master, in the diagnostic, detects that the Slave is ready for data exchange, it sends data exchange telegrams. Either the Master stores the data in the input/output direction in the address area specified during project planning or the control program must fetch or retrieve the data using specific function blocks.

## 16 Technical data

### 16.1 Device data

The technical data of the module is given in the table below.

No.	Parameter	Data	Explanations
1	Location	Switch cabinet	DIN-rail mounting
2	Enclosure	IP20	Protection against foreign bodies and water to IEC 529 (DIN 40050)
4	Service life	10 years	
5	Housing size	23 x 117 x 111 mm (screw-plug-connector included) 23 x 117 x 100 mm (screw-plug connector not included) 23 x 117 x 117 (with Option I/O8, screw-plug-connector included)	W x D x H
6	Installation position	Any	
7	Weight	130 g (160 g with Option I/O8)	
8	Operating temperature	-40°C ... +85°C	The negative temperatures are only valid for the usual conditions (not condensing)
9	Storage/transport temperature	-40°C ... +85°C	
10	Atmospheric pressure during operation during transport	795 hPa ... 1080 hPa 660 hPa ... 1080 hPa	
11	Installation altitude	2000 m 4000 m	Unrestricted Restricted - Ambient temperature $\leq 40^{\circ}\text{C}$
12	Relative humidity	Max. 80 %	No condensation, no corrosive atmosphere
14	External power supply	10...33 V DC	Standard power supply unit to DIN 19240
15	Current consumption at 24 VDC	Typ. 70 mA max 80 mA	At 10V. typ. 200 mA
16	Supply at the Profibus-interface	5 V DC / max. 50 mA	(Max. 50 mA at $< 30^{\circ}\text{C}$ ambient temperature)
17	Reverse voltage protection	Yes	But does not function!
18	Short-circuit protection	Yes	
19	Overload protection	Poly-switch	Thermal fuse
20	Undervoltage detection (USP)	$\leq 9 \text{ V DC}$	
21	Emergency power supply	$\geq 5 \text{ ms}$	Device fully operable

Table: Technical data of the module

### 16.1.1 Interface data

The table below lists the technical data of the interfaces and ports on the device. The data has been taken from the corresponding Standards.

No.	Interface designation Physical interface	ProfibusDP RS485	RS232-C RS232-C	RS485/RS422 RS485/RS422
1	Standard	EIA Standard	DIN 66020	EIA Standard
2	Transmission mode	Symmetrical asynchronous serial half-duplex  → Difference signal	Asymmetrical asynchronous serial full duplex  → Level	Symmetrical asynchronous serial half-duplex full duplex at RS422  → Difference signal
3	Transmission method	Master / Slave	Master / Slave	Master / Slave
4	Number of users : - Transmitters - Receivers	32 32	1 1	32 32
5	Cable length: - Maximum  - Baud rate-dependent	1200 m  93.75 kBd → 1200 m 187.5 kBd → 1000 m 500 kBd → 400 m 1.5 MBd → 200 m >1.5 MBd → 100 m	15 m  no	1200 m  <93.75 kBd → 1200 m 312, kBd → 500 m 625 kBd → 250 m
6	Bus topology	Line	Point-to-point	Line
7	Data rate: - Maximum  - Standard values	12 Mbit/s  9.6 kBit/s 19.2 kBit/s 93.75 kBit/s 187.5 kBit/s 500 kBit/s 1.5 Mbit/s 3 MBit/s 6 MBit/s 12 Mbit/s	120 kBit/s 2.4 k/B 4.8 k/B 9.6 kBit/s 19.2 kBit/s 38.4 kBit/s	625 kBaud 2.4 kBit/s 4.8 kBit/s 9.6 kBit/s 19.2 kBit/s 57.6 kB 312.5 kB 625 kB
8	Transmitter: - Load - Maximum voltage - Signal, unloaded - Signal, loaded	54 Ω - 7 V ... 12 V ± 5 V ± 1.5 V	3 ... 7 kΩ ± 25 V ± 15 V ± 5 V	54 Ω - 7 V ... 12 V ± 5 V ± 1.5 V
9	Receiver: - Input resistance - Max. input signal - Sensitivity	12 Ω - 7 V ... 12 V ± 0.2 V	3 ... 7 Ω ± 15 V ± 3 V	12 Ω - 7 V ... 12 V ± 0.2 V
10	Transmit range (SPACE): - Voltage level - Logic level	- 0.2 ... + 0.2 V 0	+ 3 ... + 15 V 0	- 0.2 ... + 0.2 V 0
11	Transmit pause (MARK): - Voltage level - Logic level	+ 1.5 ... +5 V 1	- 3 ... -15 V 1	+ 1.5 ... +5 V 1

Table: Technical data of the interfaces at the module

## 17 Commissioning guide

### 17.1 Note

Only trained personnel following the safety regulations may commission the UNIGATE®.

### 17.2 Components

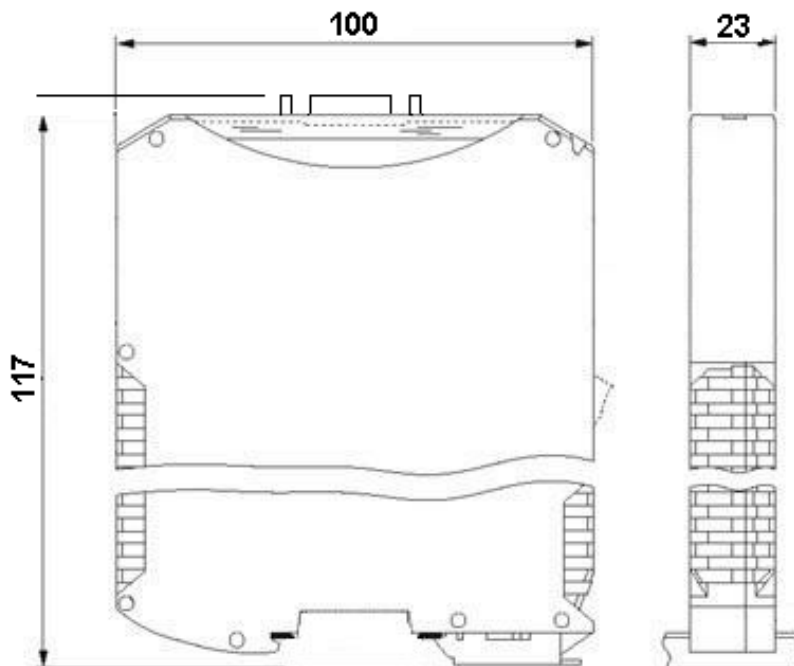
You will require the following components to commission the UNIGATE®:

- UNIGATE®
- Connection cable from gateway to the process
- Connector for Profibus connection to the Gateway
- PROFIBUS cable (this cable is generally already installed on site!)
- 10..33 V DC power supply (DIN 19240)
- Type file or GSD file and user manual (a sample file as well as the user manual can be ordered separately or downloaded free of charge from our homepage at [www.deutschmann.de](http://www.deutschmann.de)).

### 17.3 Installation

The UNIGATE® CL - PROFIBUS DP module features protection type IP20 and is thus suitable for switch cabinet use. The device is designed for snapping onto a 35 mm DIN-rail.

### 17.4 Dimensional drawing UNIGATE® CL - PROFIBUS DP



### 17.5 Commissioning

It is essential that you perform the following steps during commissioning in order to ensure that the module operates correctly:

## 17.6 Setting the PROFIBUS address

Set the PROFIBUS address at the fieldbus end of the module on the two rotary switches designated "PROFIBUS-ID High" and "PROFIBUS-ID Low". This adjustment is carried out in a hexadecimal way.

Example:

The PROFIBUS-ID is 26 decimal = 1A hexadecimal

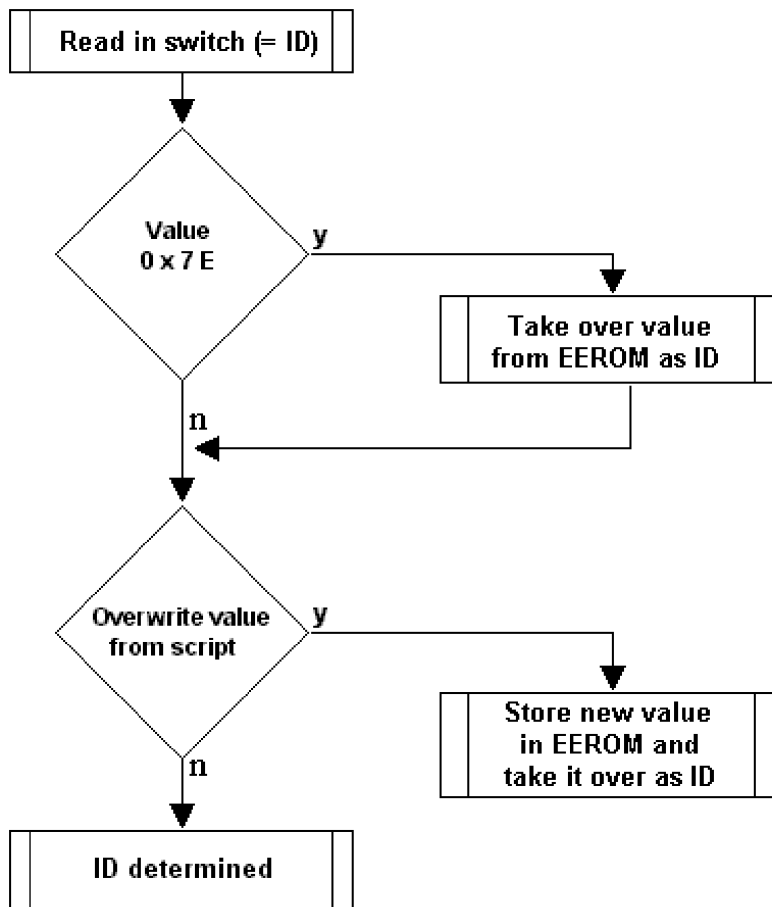
The switch "PROFIBUS-ID High" has to be set to 1 and the switch "PROFIBUS-ID Low" has to be set to A.

If the rotary switch is set to "7E" (=126) on the PROFIBUS-side (PROFIBUS-ID), the gateway operates with a PROFIBUS-address, that is stored in the EEROM. In the state of delivery this address is set to 126 and can only be changed by a PROFIBUS-master via the PROFIBUS itself. The address 126 is reserved in the PROFIBUS for this purpose; that means that a slave with this address can never carry out a data exchange, but it can only be configured with a new ID.

In case the rotary switch is set to a value between 0...125, the gateway operates - with this PROFIBUS-ID and a change via the master is not possible.

The ID can also be set through the Script command "Set (Fieldbus ID, xx)" (xx = PROFIBUS-ID in decimal form).

### Flow diagram



**Attention:**

*The PROFIBUS address set must correspond to the planned address under COM PROFIBUS!*

*It is read in only on power-up of the gateway!*

## 17.7 PROFIBUS connection

Connect the device to the Profibus at the interface labelled "PROFIBUS".

## 17.8 Connection to the process device

Please also read the manual for the process device when commissioning the process device.

## 17.9 Connecting the supply voltage

Please connect 10..33 DC voltage to the terminals provided for this.

## 17.10 Shield connection

Earth the top-hat rail onto which the module has been snapped.

## 17.11 Project planning

Use any project planning tool for project planning.

If the required GSD file was not supplied with your project planning tool, a sample file can be found on the Internet ([www.deutschmann.de](http://www.deutschmann.de)).

## 17.12 Literature

We recommend that you read book "Schnelleinstieg in PROFIBUS DP", author M. Popp, to help you quickly get to grips with the subject of the PROFIBUS DP and the mode of operation of the available ASICs. The book can be ordered from the PROFIBUS User Organisation, Order No. 4.071. (German-language).

Address:

PROFIBUS Nutzerorganisation e.V.

Haid-und-Neu-Str. 7

D-76131 Karlsruhe

Germany

Tel: 0721 9658 590



## 18 Servicing

Should questions arise that are not covered in this manual you can find further information in our

- FAQ/Wiki area on our homepage [www.deutschmann.com](http://www.deutschmann.com) or directly in our Wiki on [www.wiki.deutschmann.de](http://www.wiki.deutschmann.de)

If your questions are still unanswered please contact us directly.

**Please note down the following information before calling:**

- Device designation
- Serial number (S/N)
- Article number
- Error number and error description

Your request will be recorded in the Support center and will be processed by our Support Team as quickly as possible (Usually in 1 working day, rarely more than 3 working days.).

The technical support hours:

Monday to Thursday from 8 am to midday and from 1 pm to 4 pm, Friday from 8 am to midday. (CET)

Deutschmann Automation GmbH & Co. KG  
Carl-Zeiss-Straße 8  
D-65520 Bad-Camberg  
Germany

Central office and sales department	+49 6434 9433-0
Technical support	+49 6434 9433-33

Fax sales department	+49 6434 9433-40
Fax technical support	+49 6434 9433-44

E-mail technical support	<a href="mailto:support@deutschmann.de">support@deutschmann.de</a>
--------------------------	--

### 18.1 Returning a device

If you return a device, we require as comprehensive a fault/error description as possible. We require the following information in particular:

- What error number was displayed?
- What is the supply voltage ( $\pm 0.5$  V) with Gateway connected?
- What were you last doing or what last happened on the device (programming, error on power-up,...)?

The more precise information a fault/error description you provide, the more exactly we will be able to pinpoint the possible causes.

### 18.2 Downloading PC software

You can download current information and software free of charge from our Internet server. <http://www.deutschmann.com>

## 19 Annex

### 19.1 Explanations of the abbreviations

#### General

CL	=	Product group CL (Compact Line)
CM	=	Product group CM (CANopen Line)
CX	=	Product group CX
EL	=	Product group EL (Ethernet Line)
FC	=	Product group FC (Fast Connect)
GT	=	Galvanic separation RS-side
GY	=	Housing color gray
MB	=	Product group MB
RS	=	Product group RS
SC	=	Product group SC (Script)
232/485	=	Interface RS232 and RS485 switchable
232/422	=	Interface RS232 and RS422 switchable
DB	=	Additional RS232 DEBUG-interface
D9	=	Connection of the RS through 9-pin D-SUB instead of 5-pin screw-plug connector
PL	=	Board only without DIN-rail module and without housing cover
PD	=	Board only without DIN-rail module and with housing cover
AG	=	Gateway installed in a die-cast aluminum housing
EG	=	Gateway installed in a stainless steel housing
IC	=	Product group IC (IC-design DIL32)
IC2	=	Product group IC2 (IC-design DIL32)
IO8	=	Option I/O8
16	=	Script memory expanded to 16KB
5V	=	Operating voltage 5V
3,3V	=	Operating voltage 3.3V

#### Fieldbus

CO	=	CANopen
C4	=	CANopen V4
C4X	=	CANopen V4-version X (see comparison table UNIGATE® IC for the respective product)
DN	=	DeviceNet
EC	=	EtherCAT
EI	=	Ethernet/IP
FE	=	Ethernet 10/100 MBit
FEX	=	Ethernet 10/100 MBit-version X (see comparison table UNIGATE® IC for the respective product)
IB	=	Interbus
IBL	=	Interbus
LN62	=	LONWorks62
LN512	=	LONWorks512
ModTCP	=	ModbusTCP
MPI	=	Siemens MPI®
PL	=	Powerlink
PN	=	Profinet-IO
PBDP	=	ProfibusDP
PBDPL	=	ProfibusDP-version L (see comparison table UNIGATE® IC for the respective product)

product)  
PBDPX = ProfibusDP-version X (see comparison table UNIGATE® IC for the respective product)  
PBDPV0 = ProfibusDPV0  
PBDPV1 = ProfibusDPV1  
RS = Serial RS232/485/422

## 19.2 Hexadecimal table

Hex	Decimal	Binary
0	0	0000
1	1	0001
2	2	0010
3	3	0011
4	4	0100
5	5	0101
6	6	0110
7	7	0111
8	8	1000
9	9	1001
A	10	1010
B	11	1011
C	12	1100
D	13	1101
E	14	1110
F	15	1111





